

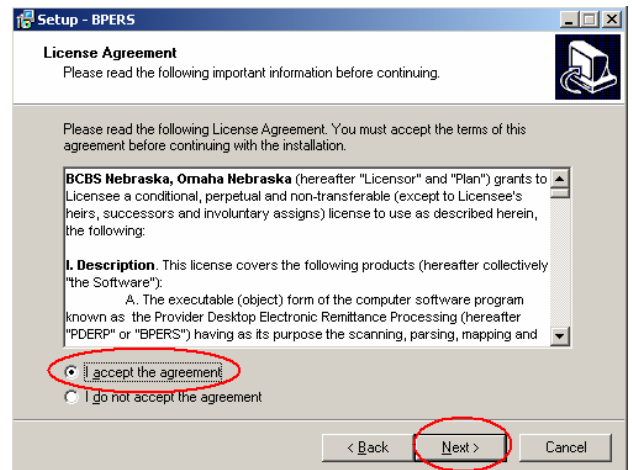
BPERS Installation Instructions

- 1) Put the CD labeled as BPERS Setup into your CD Rom drive
- 2) The CD will autorun if the autorun is enabled on your PC.
- 3) If the CD does not autorun, you need to do the following:
 - a. Double-Click on “My Computer” icon located on your desktop
 - b. In the My Computer window locate your CD or DVD Rom Drive labeled as “BPERS Setup”
 - c. Double-Click on the “BPER Setup” to open up the contents of your BPERS Setup CD
 - d. Within the BPERS Setup CD contents locate the file labeled as <Name of your facility>_BPERS_Setup.exe
 - e. Double-click on the file to start the Installation program.
- 4) The Installation Wizard will display the following screen:

Click Next



- 5) Carefully read the License Agreement page, then select “I accept the agreement” and click Next.

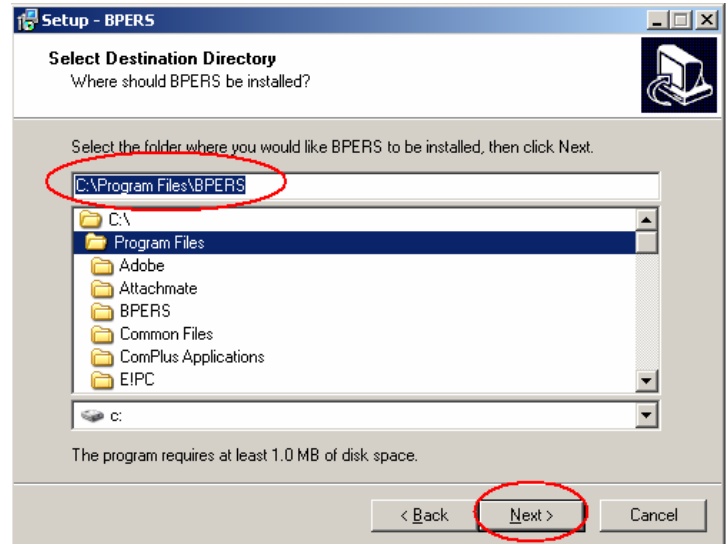


- 6) You will now see the screen asking where BPERS should be installed.

The installation folder is defaulted to C:/Program Files/BPERS.

Keep that default.

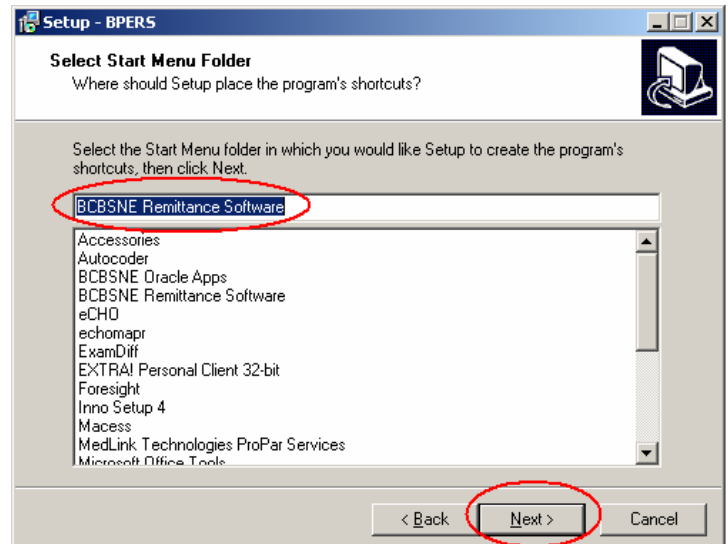
Click Next.



- 7) The Installation program is going to create a folder called “BCBSNE Remittance Software” under your Start → Program Files.

Keep that default.

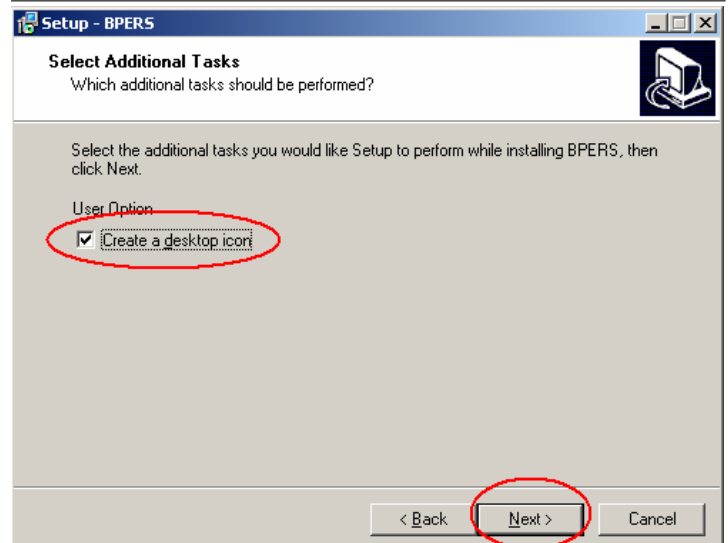
Click Next.



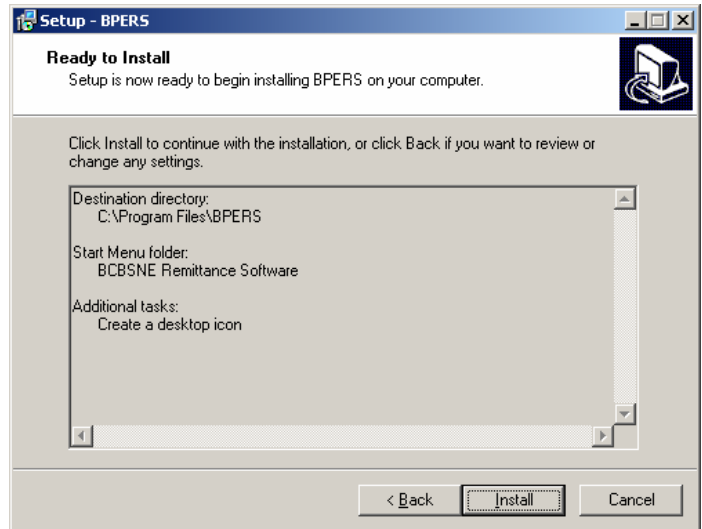
- 8) If you would like to create a short-cut on your Desktop for BPERS,

check “Create a Desktop Icon”,

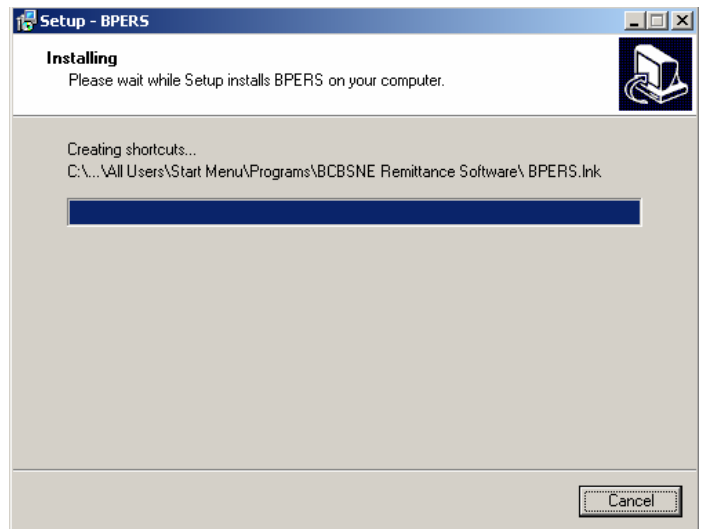
and click Next.



- 9) Click Install to install the BPERS software.



A screen shows the progress of the installation:



- 10) When complete, you will see the Installation Confirmation screen:

Click Finish.

You have installed BPERS!

